



# HSP90A Polyclonal Antibody

<b>Catalog No</b>	YP-Ab-03925
<b>Isotype</b>	IgG
<b>Reactivity</b>	Human;Mouse;Rat
<b>Applications</b>	WB;IHC;IF;ELISA
<b>Gene Name</b>	HSP90AA1
<b>Protein Name</b>	Heat shock protein HSP 90-alpha
<b>Immunogen</b>	The antiserum was produced against synthesized peptide derived from human HSP90A. AA range:683-732
<b>Specificity</b>	HSP90A Polyclonal Antibody detects endogenous levels of HSP90A protein.
<b>Formulation</b>	Liquid in PBS containing 50% glycerol, 0.5% BSA and 0.02% sodium azide.
<b>Source</b>	Polyclonal, Rabbit,IgG
<b>Purification</b>	The antibody was affinity-purified from rabbit antiserum by affinity-chromatography using epitope-specific immunogen.
<b>Dilution</b>	Western Blot: 1/500 - 1/2000. Immunohistochemistry: 1/100 - 1/300. Immunofluorescence: 1/200 - 1/1000. ELISA: 1/40000. Not yet tested in other applications.
<b>Concentration</b>	1 mg/ml
<b>Purity</b>	≥90%
<b>Storage Stability</b>	-20°C/1 year
<b>Synonyms</b>	HSP90AA1; HSP90A; HSPC1; HSPCA; Heat shock protein HSP 90-alpha; Heat shock 86 kDa; HSP 86; HSP86; Renal carcinoma antigen NY-REN-38
<b>Observed Band</b>	85kD
<b>Cell Pathway</b>	Nucleus . Cytoplasm . Melanosome . Cell membrane . Mitochondrion . Identified by mass spectrometry in melanosome fractions from stage I to stage IV.
<b>Tissue Specificity</b>	Adult brain,Brain,Brain cortex,Breast,Cajal-Retzius
<b>Function</b>	caution:Despite classification as a pseudogene, the existence of this protein is supported by unambiguous mass spectrometry evidence.,function:Molecular chaperone.,function:Molecular chaperone. Has ATPase activity.,similarity:Belongs to the heat shock protein 90 family.,subcellular location:Identified by mass spectrometry in melanosome fractions from stage I to stage IV.,subunit:Homodimer. Interacts with AHSA1, SMYD3 and TOM34. Interacts with FNIP1 and HSF1.,
<b>Background</b>	The protein encoded by this gene is an inducible molecular chaperone that functions as a homodimer. The encoded protein aids in the proper folding of specific target proteins by use of an ATPase activity that is modulated by co-chaperones. Two transcript variants encoding different isoforms have been found for this gene. [provided by RefSeq, Jan 2012],



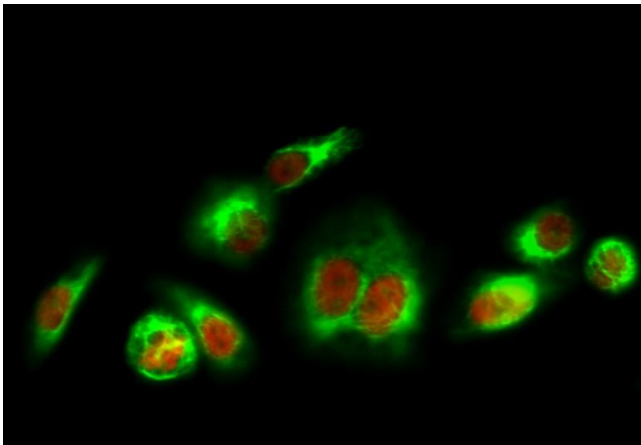
**matters needing attention**

Avoid repeated freezing and thawing!

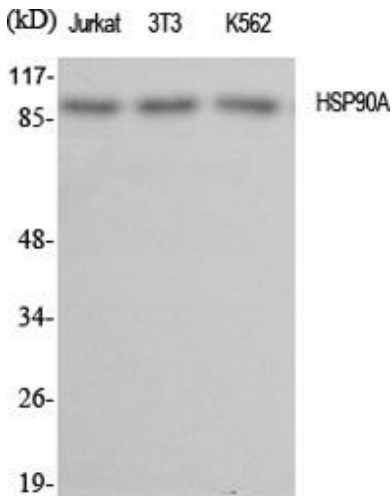
**Usage suggestions**

This product can be used in immunological reaction related experiments. For more information, please consult technical personnel.

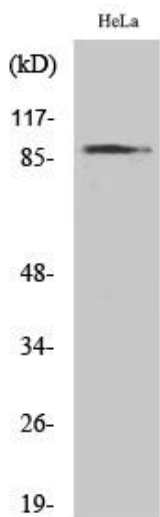
**Products Images**



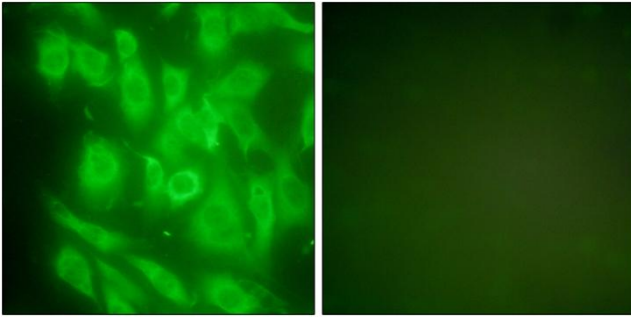
Immunofluorescence analysis of HeLa cell. 1, HSP90A Polyclonal Antibody (red) was diluted at 1:200 (4° overnight). Active Caspase-3 Monoclonal Antibody (5E1) (green) was diluted at 1:200 (4° overnight). 2, Goat Anti Rabbit Alexa Fluor 594 Catalog: RS3611 was diluted at 1:1000 (room temperature, 50min). Goat Anti Mouse Alexa Fluor 488 Catalog: RS3208 was diluted at 1:1000 (room temperature, 50min).



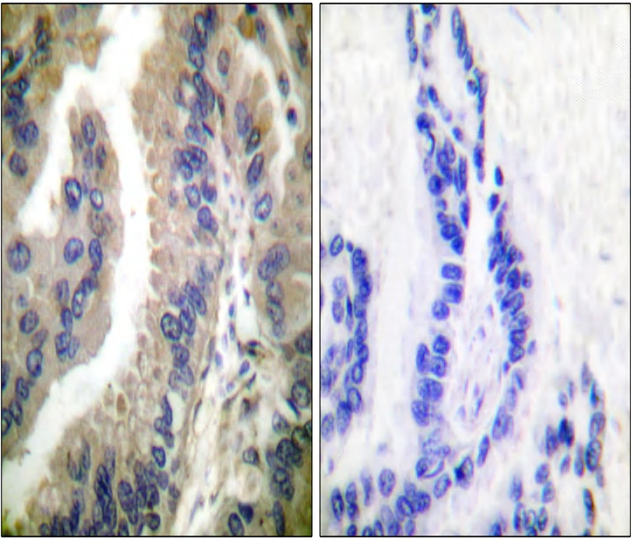
Western Blot analysis of various cells using HSP90A Polyclonal Antibody diluted at 1:2000



Western Blot analysis of HeLa cells using HSP90A Polyclonal Antibody diluted at 1:2000



Immunofluorescence analysis of NIH/3T3 cells, using HSP90A Antibody. The picture on the right is blocked with the synthesized peptide.



Immunohistochemistry analysis of paraffin-embedded human lung carcinoma tissue, using HSP90A Antibody. The picture on the right is blocked with the synthesized peptide.